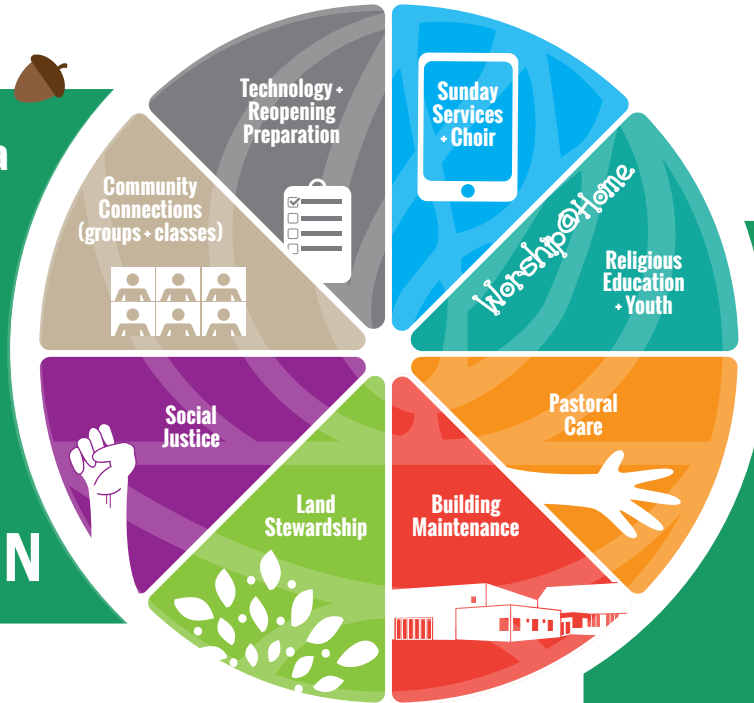


Even though our physical doors have been closed...

We have remained a  
*virtually open*  
**STRONG**  
*flexible*  
**VIBRANT**  
*adaptive*  
**CONSTANT**  
**CONGREGATION**



We've stayed connected...  
*...a bit differently, but...*



*...it has expanded our reach to the wider world and leading WBUUC into an exciting future!*

*What the Board is asking*

**Pledge with a gift that works for you.**

*The "nuts" & bolts of our need.*

**Match your prior year gift, increase it by 2% or more if you can or make your first pledge!**



**In this way, households less financially challenged by the pandemic can help carry us all through because**

**STRONG IS WHAT WE MAKE EACH OTHER**



**2 WAYS 2 PLEDGE:**

**1**

**Pledge Online!**

<http://bit.ly/2021-22-pledge-form>

**2**

**Via Pledge Card!**

Return your completed pledge card to church by mail.



*Questions?* office@wbuuc.org or (651) 235-0972 | *Pledge today!* wbuuc.org/pledge

